



Region 24 Middle School All-Region Orchestra Audition Contract

Please type or print neatly

First Name	M.I.	Last Name	Grade	Instrument

School	Home Address	City	Zip	Age

Student Phone	Parent Emergency Phone	Director's Name

I am auditioning for (check the appropriate box):

<input type="checkbox"/> Chamber/ Sinfonia <i>6th-8th grade</i>	<input type="checkbox"/> Concert Orchestra <i>6th and 7th grade only</i>
---	--

Before the applicant will be allowed to audition, the applicant and applicant's parents must sign the following agreement:

We, the undersigned, understand and accept the obligations and responsibilities that come with membership in the Region 24 Orchestras. We agree to attend all scheduled rehearsals and follow the code of conduct of an All-Region Orchestra member. As the parent / legal guardian of the applicant, I authorize Region 24 Orchestra officials to seek medical help for my child, if needed.

Applicant's signature

Parent's signature

_____ \$15.00 Auditions fee enclosed

_____ check #, or _____ cash

Checks made out to: _____

Parents: Please Retain this Page for your Records

Region 24 Code of Conduct for All Students and Directors Participating in Music Activities:

1. All directors who have students competing or observing music activities in Region 24 are to be directly responsible for the conduct of their students. The director may provide additional teachers and chaperones to assist the director in supervising students.
2. Any sponsor who enters a student for a Region 24 Orchestra function must be available for both the middle school and high school auditions and the concert/clinic that applies to their students. In the event of an emergency or an unavoidable conflict, a director must immediately notify the Orchestra Division Chair and then secure the services of a qualified replacement who will serve as a proxy at the missed function. The acceptance of the replacement and their qualification is at the sole discretion of the Orchestra Division Chair.
3. No student shall interfere with another audition or prohibit any student from performing to the best of their individual ability.
4. In the event that the applicant becomes a member of the Region 24 Orchestras, the applicant agrees to attend all rehearsals and performances. Students tardy to Region Orchestra events are subject to loss of their chair and/or removal from Region Orchestra by the Region Orchestra Chair. Failure to attend any rehearsals will result in loss of membership in the orchestra. **The Region 24 Orchestra Division believes that All-State participation is one of the highest educational processes open to the high school music student. Therefore, it is absolutely necessary that every student selected to the All-State Orchestra will have participated in all TMEA Region, Area, and State activities, rehearsals, and concerts.**
5. Dress for the concert will be either the student's school orchestra uniform or "Sunday best."
6. ***A student who fails to meet their obligations to the Region Orchestra will be entered into the appeals process, possibly jeopardizing their entry in the Area/All State process. Conflicts with other organizations, personal discomforts, personal schedules, etc. will not constitute a reasonable excuse for missing any activities in this region.***
Exceptions: personal illness, hospitalization and doctor's notes will be dealt with individually at the discretion of the Region Chair. The Region Chair must be notified of such special circumstances immediately.

Absolutely no deviation from this schedule will be allowed. If you cannot meet these obligations, please do not apply for or accept membership in these organizations.

2023 MS ALL-REGION TENTATIVE SCHEDULE

EVENT	DATE/TIME	SITE
MS Region Auditions	Saturday, October 28, 2023 INDIVIDUAL TIMES ASSIGNED	Centennial HS (FISD)
MS Region Clinic/Rehearsal	Friday, November 03, 2023 TIME: 6:00PM-9:00PM	Memorial HS (FISD)
MS Region Clinic/Rehearsal	Saturday, November 04, 2023 TIME: 9:00AM-4:00PM	Memorial HS (FISD)
MS Region Concert	Saturday, November 04, 2023 TIME: 4:00PM-5:30PM	Memorial HS (FISD)

Etude

Simandl

$\text{♩} = 100-120$

CHAM/SINF BASS

A handwritten musical score for a bass instrument, consisting of eight staves. The music is written in bass clef with a key signature of one sharp (F#) and a common time signature (C). The tempo is indicated as 100-120 beats per minute. The score features a variety of rhythmic patterns, including eighth and sixteenth notes, and rests. There are several dynamic markings, such as accents and hairpins, and some phrasing slurs. The notation is clear and legible, with some corrections visible in the second and third staves.

Capricol Suite, II. $\text{♩} = 78-84$

by Warlock

Allegretto, ma un poco lento



A $\text{♩} \text{VV} \text{♩} \text{VV} \text{♩} \text{VV}$ simile (throughout)

mp

B Thumb position

Poco più lento $\text{♩} \text{VV}$ rallentando . . . molto a tempo

(Note: the $\text{♩} \text{VV}$ bowing should be observed throughout the first three lines)

Anvil Chorus $\text{♩} = 90-100$

by Verdi/Woodstehulme

f tr 1 V tr 2 3 4 tr

5 V tr 6 7 8 V

9 tr 10 V 11 tr 12 tr 13 tr *p*

14 15

Blue Fire Fiddler

by Newbold

CHAM/SINF BASS

Musical notation for Blue Fire Fiddler, measures 41-44. The key signature is one sharp (F#). The tempo is marked as quarter note = 110-120. Measure 41 starts with a forte (*f*) dynamic and a breath mark (*V*). Measures 42, 43, and 44 continue the melodic line.

Musical notation for Blue Fire Fiddler, measures 45-47. Measure 45 is boxed with the number 45. The notation features a series of eighth notes with accents and breath marks.

Musical notation for Blue Fire Fiddler, measures 48-50. The notation continues with eighth notes and accents.

Musical notation for Blue Fire Fiddler, measures 51-54. Measure 53 is boxed with the number 53. The piece concludes with a final melodic phrase in measure 54.

October

by Whitacre/Lavender

♩ = 84

Con moto, molto cantabile



Musical notation for October, measures 43-45. Measure 43 is boxed with the number 43. The notation shows a melodic phrase starting with a first finger on the A string (*1 on A*) and a mezzo-forte (*mf*) dynamic with an accent (>).

Musical notation for October, measures 44-50. Measure 44 is boxed with the number 44. The notation includes fingerings (1 on D, 4 1, 2, -1 (on A), 1 4, 1 -4) and a tempo change to *Poco più mosso*.

Musical notation for October, measures 51-56. Measure 51 is boxed with the number 51. The notation includes dynamics (*rit. mp*, *f*, *molto rit.*) and a tempo change to *♩ = 60*.

Musical notation for October, measures 57-60. Measure 57 is boxed with the number 57. The notation includes dynamics (*a tempo*, *rit. e dim.*, *mf*, *p*) and concludes with a final melodic phrase.

The Chase

by Shaffer

♩ = 144

CHAM/SINF BASS



pizz,

76

f

78



79

80

81

82

83



84

85

mp

87

88

86



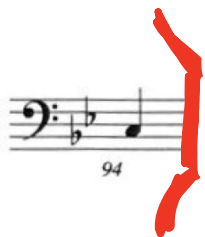
89

90

91

92

93



94

* Note : this entire excerpt is pizzicato